

Washoe County Sheriff's Office

CAB Data

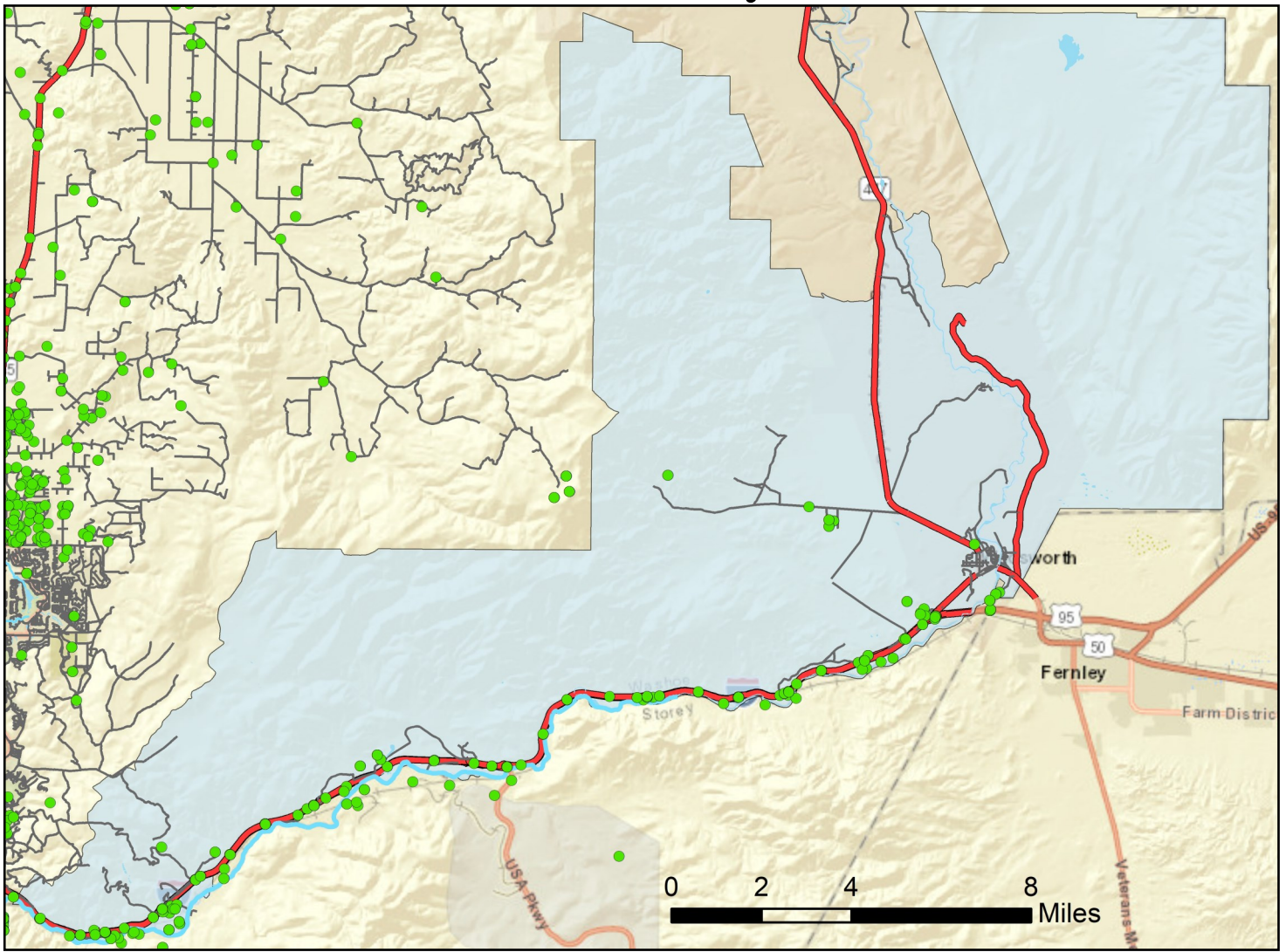
Quarter 2 2023



Note: Calls for service (CFS) and case data reflect WCSO jurisdictions. CFS and cases are mapped with useable coordinates only.

Published: 7/12/2023

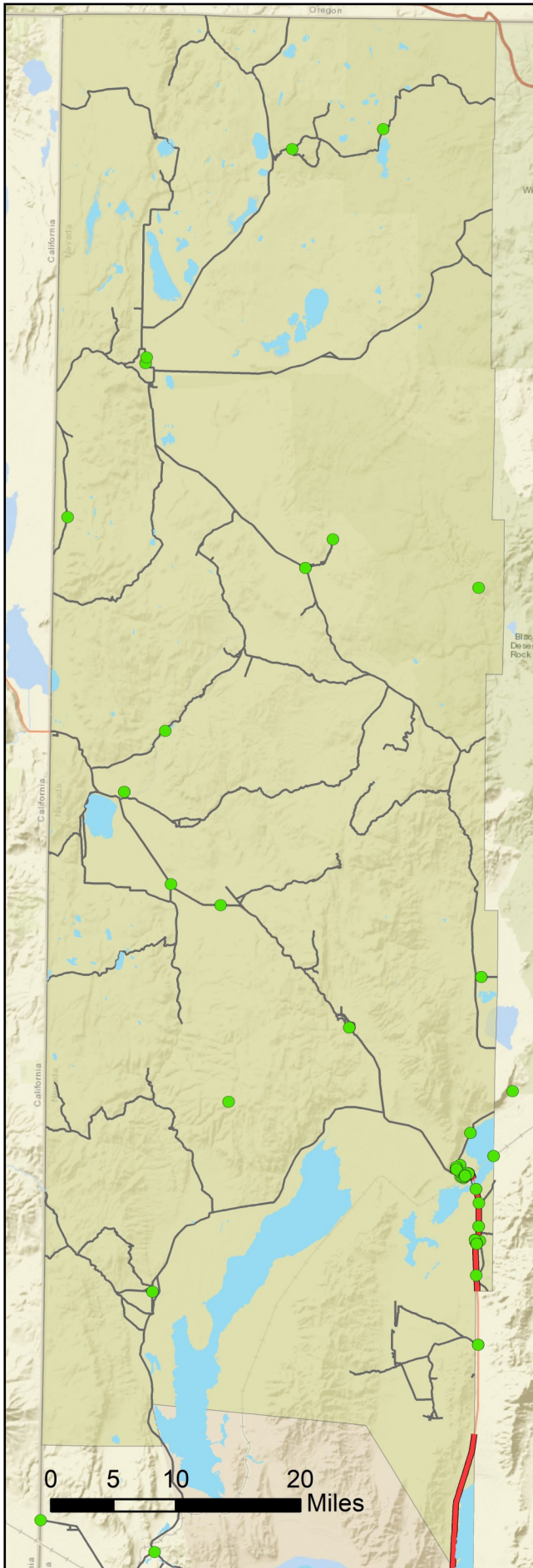
East Truckee Canyon CAB



Offense Categories	Q2	3yr Avg	Up/Down	Offense Categories	Q2	3yr Avg	Up/Down
All Other Offenses	1	4	↓	Homicide Offenses	0	0	●
Animal Cruelty	0	0	●	Human Trafficking Offenses	0	0	●
Arson	0	0	●	Kidnapping/Abduction	0	0	●
Assault Offenses	1	1	●	Larceny/Theft Offenses	0	4	↓
Bad Checks	0	0	●	Liquor Law Violations	0	0	●
Bribery	0	0	●	Motor Vehicle Theft	0	0	●
Burglary	1	1	●	Peeping Tom	0	0	●
Counterfeiting/Forgery	0	0	●	Pornography/Obscene Material	0	0	●
Curfew/Loitering/Vagrancy	0	0	●	Prostitution Offenses	0	0	●
Destruction/Damage/Vandalism	0	1	↓	Robbery	0	0	●
Disorderly Conduct	0	0	●	Sex Offenses	0	0	●
Driving Under the Influence	0	0	●	Sex Offenses, Nonforcible	0	0	●
Drug Equipment Violations	0	1	↓	Stolen Property Offenses	0	0	●
Drug/Narcotic Violations	1	3	↓	Trespass of Real Property	0	0	●
Drunkenness	0	0	●	Weapon Law Violations	0	0	●
Embezzlement	0	0	●	CFS Status	Q2	3yr Avg	Up/Down
Extortion/Blackmail	0	0	●	Dispatched	58	54	↑
Family Offenses (Nonviolent)	0	0	●	Initiated	148	174	↓
Fraud Offenses	0	0	●	Unspecified	251	176	↑
Gambling Offenses	0	0	●	Total	457	404	↑

Note: Initiated CFS are defined by whether the created date and time listed in the CFS match the on scene date and time entered by dispatch. Additionally, follow up and assignment CFS types are included in this category. Dispatched CFS are defined by whether an on scene time is listed in the CFS, and the CFS is not initially defined as initiated. Unspecified CFS include CFS with no on scene date and time information.

Gerlach/Empire CAB



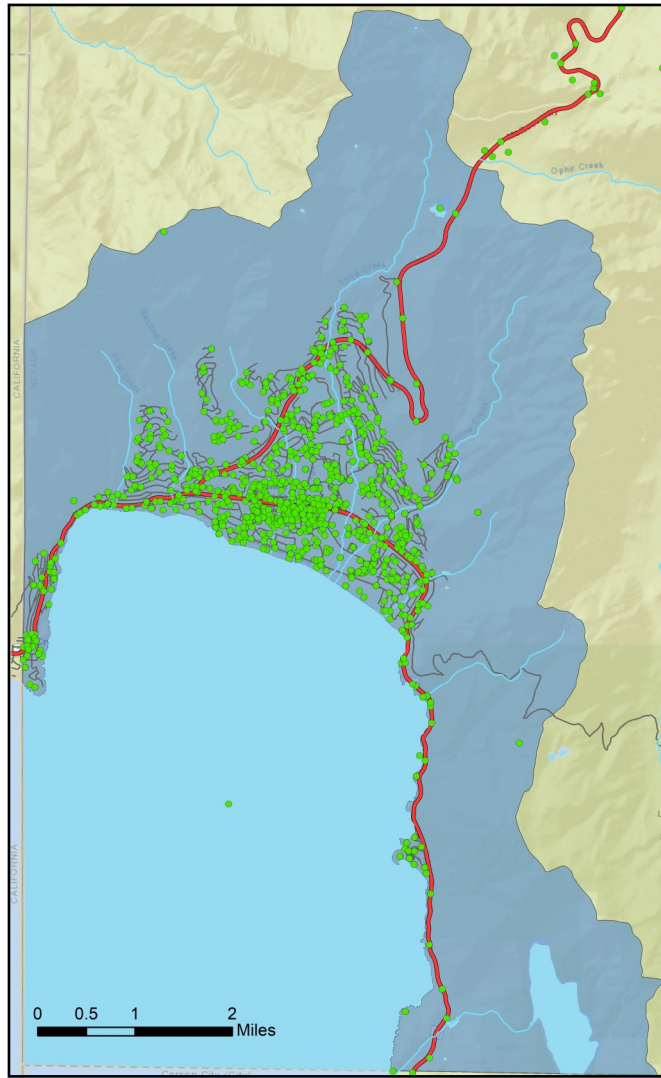
Offense Categories	Q2	3yr Avg	Up/Down
All Other Offenses	0	0	●
Animal Cruelty	0	0	●
Arson	0	0	●
Assault Offenses	0	1	↓
Bad Checks	0	0	●
Bribery	0	0	●
Burglary	0	0	●
Counterfeiting/Forgery	0	0	●
Curfew/Loitering/Vagrancy	0	0	●
Destruction/Damage/Vandalism	0	0	●
Disorderly Conduct	0	0	●
Driving Under the Influence	0	0	●
Drug Equipment Violations	0	0	●
Drug/Narcotic Violations	0	0	●
Drunkenness	0	0	●
Embezzlement	0	0	●
Extortion/Blackmail	0	0	●
Family Offenses (Nonviolent)	0	0	●
Fraud Offenses	0	0	●
Gambling Offenses	0	0	●

Offense Categories	Q2	3yr Avg	Up/Down
Homicide Offenses	0	0	●
Human Trafficking Offenses	0	0	●
Kidnapping/Abduction	0	0	●
Larceny/Theft Offenses	1	0	↑
Liquor Law Violations	0	0	●
Motor Vehicle Theft	0	0	●
Peeping Tom	0	0	●
Pornography/Obscene Material	0	0	●
Prostitution Offenses	0	0	●
Robbery	0	0	●
Sex Offenses	0	0	●
Sex Offenses, Nonforcible	0	0	●
Stolen Property Offenses	0	0	●
Trespass of Real Property	0	0	●
Weapon Law Violations	0	1	↓

CFS Status	Q2	3yr Avg	Up/Down
Dispatched	21	22	↓
Initiated	196	217	↓
Unspecified	33	21	↑
Total	250	260	↓

Note: Initiated CFS are defined by whether the created date and time listed in the CFS match the on scene date and time entered by dispatch. Additionally, follow up and assignment CFS types are included in this category. Dispatched CFS are defined by whether an on scene time is listed in the CFS, and the CFS is not initially defined as initiated. Unspecified CFS include CFS with no on scene date and time information.

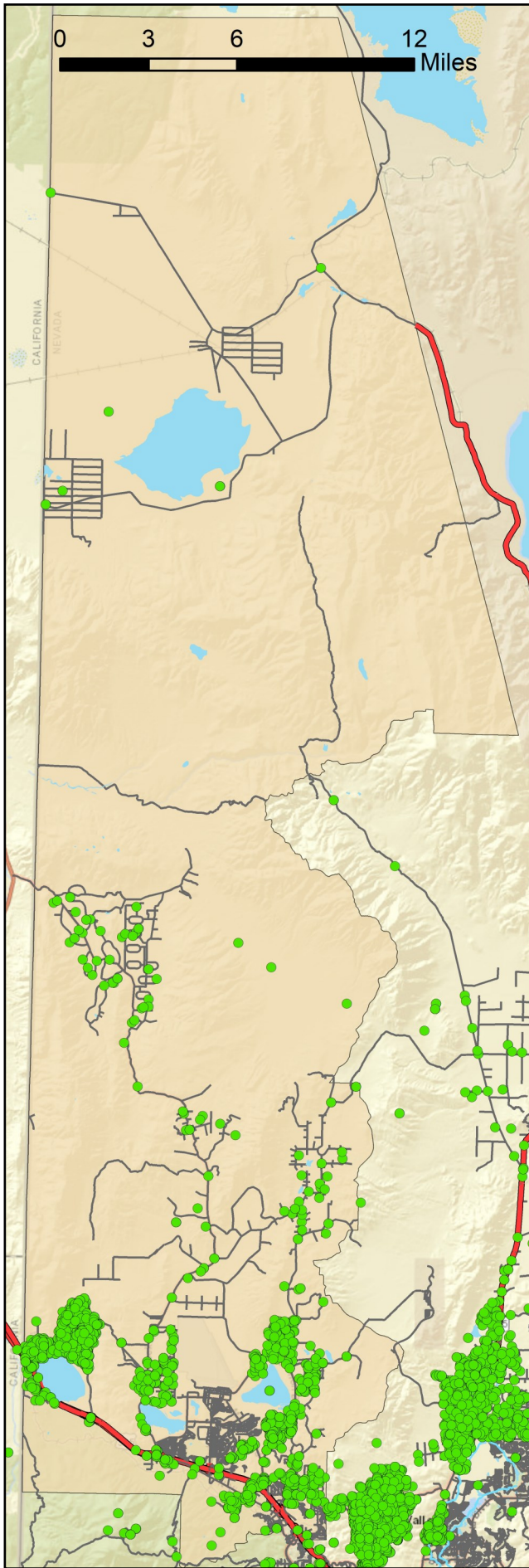
Incline Village/Crystal Bay CAB



Offense Categories	Q2	3yr Avg	Up/Down	Offense Categories	Q2	3yr Avg	Up/Down
All Other Offenses	13	10	↑	Homicide Offenses	1	0	↑
Animal Cruelty	0	0	●	Human Trafficking Offenses	0	0	●
Arson	0	0	●	Kidnapping/Abduction	5	0	↑
Assault Offenses	19	7	↑	Larceny/Theft Offenses	8	8	●
Bad Checks	0	0	●	Liquor Law Violations	1	1	●
Bribery	0	0	●	Motor Vehicle Theft	0	1	↓
Burglary	2	3	↓	Peeping Tom	0	0	●
Counterfeiting/Forgery	0	1	↓	Pornography/Obscene Material	0	0	●
Curfew/Loitering/Vagrancy	0	1	↓	Prostitution Offenses	0	1	↓
Destruction/Damage/Vandalism	5	13	↓	Robbery	0	0	●
Disorderly Conduct	0	1	↓	Sex Offenses	6	1	↑
Driving Under the Influence	0	8	↓	Sex Offenses, Nonforcible	0	0	●
Drug Equipment Violations	4	2	↑	Stolen Property Offenses	1	0	↑
Drug/Narcotic Violations	6	4	↑	Trespass of Real Property	5	2	↑
Drunkenness	0	0	●	Weapon Law Violations	0	0	●
Embezzlement	1	0	↑	CFS Status	Q2	3yr Avg	Up/Down
Extortion/Blackmail	1	0	↑	Dispatched	598	649	↓
Family Offenses (Nonviolent)	1	2	↓	Initiated	2,084	2,137	↓
Fraud Offenses	6	9	↓	Unspecified	809	852	↓
Gambling Offenses	0	0	●	Total	3,491	3,638	↓

Note: Initiated CFS are defined by whether the created date and time listed in the CFS match the on scene date and time entered by dispatch. Additionally, follow up and assignment CFS types are included in this category. Dispatched CFS are defined by whether an on scene time is listed in the CFS, and the CFS is not initially defined as initiated. Unspecified CFS include CFS with no on scene date and time information.

North Valleys CAB



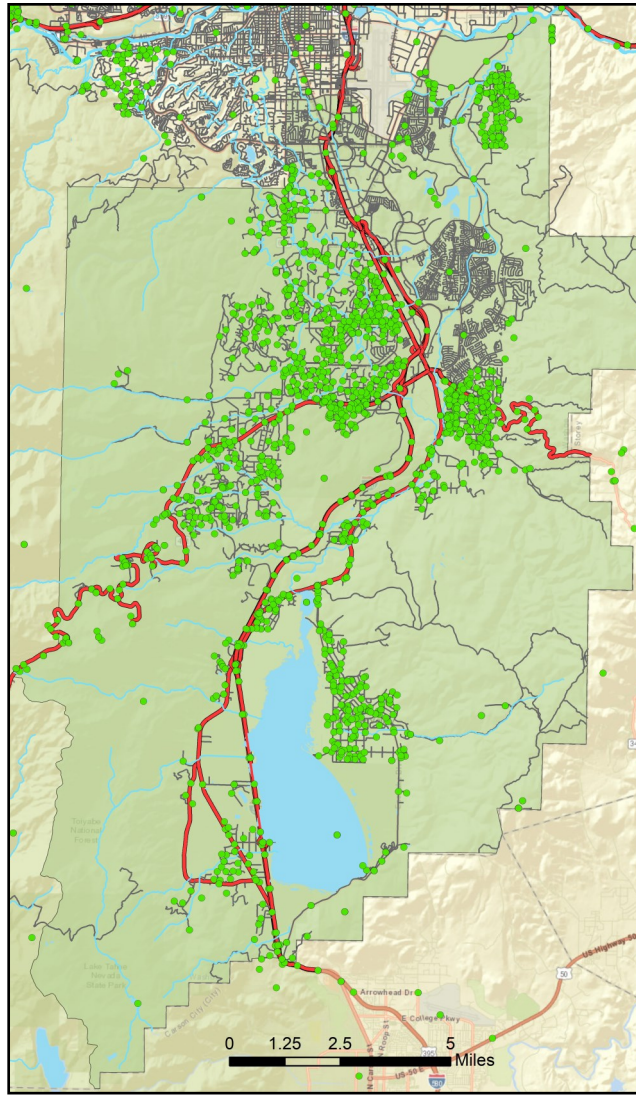
Offense Categories	Q2	3yr Avg	Up/Down
All Other Offenses	56	51	↑
Animal Cruelty	0	0	●
Arson	2	0	↑
Assault Offenses	48	33	↑
Bad Checks	0	0	●
Bribery	0	0	●
Burglary	8	8	●
Counterfeiting/Forgery	4	2	↑
Curfew/Loitering/Vagrancy	0	1	↓
Destruction/Damage/Vandalism	29	23	↑
Disorderly Conduct	5	4	↑
Driving Under the Influence	15	14	↑
Drug Equipment Violations	16	9	↑
Drug/Narcotic Violations	19	14	↑
Drunkenness	0	0	●
Embezzlement	0	1	↓
Extortion/Blackmail	1	1	●
Family Offenses (Nonviolent)	9	6	↑
Fraud Offenses	22	27	↓
Gambling Offenses	0	0	●

Offense Categories	Q2	3yr Avg	Up/Down
Homicide Offenses	0	0	●
Human Trafficking Offenses	0	0	●
Kidnapping/Abduction	1	2	↓
Larceny/Theft Offenses	29	22	↑
Liquor Law Violations	0	1	↓
Motor Vehicle Theft	5	5	●
Peeping Tom	0	0	●
Pornography/Obscene Material	0	0	●
Prostitution Offenses	0	0	●
Robbery	1	1	●
Sex Offenses	6	6	●
Sex Offenses, Nonforcible	0	0	●
Stolen Property Offenses	3	5	↓
Trespass of Real Property	7	4	↑
Weapon Law Violations	7	6	↑

CFS Status	Q2	3yr Avg	Up/Down
Dispatched	825	817	↑
Initiated	796	803	↓
Unspecified	1,030	698	↑
Total	2,651	2,318	↑

Note: Initiated CFS are defined by whether the created date and time listed in the CFS match the on scene date and time entered by dispatch. Additionally, follow up and assignment CFS types are included in this category. Dispatched CFS are defined by whether an on scene time is listed in the CFS, and the CFS is not initially defined as initiated. Unspecified CFS include CFS with no on scene date and time information.

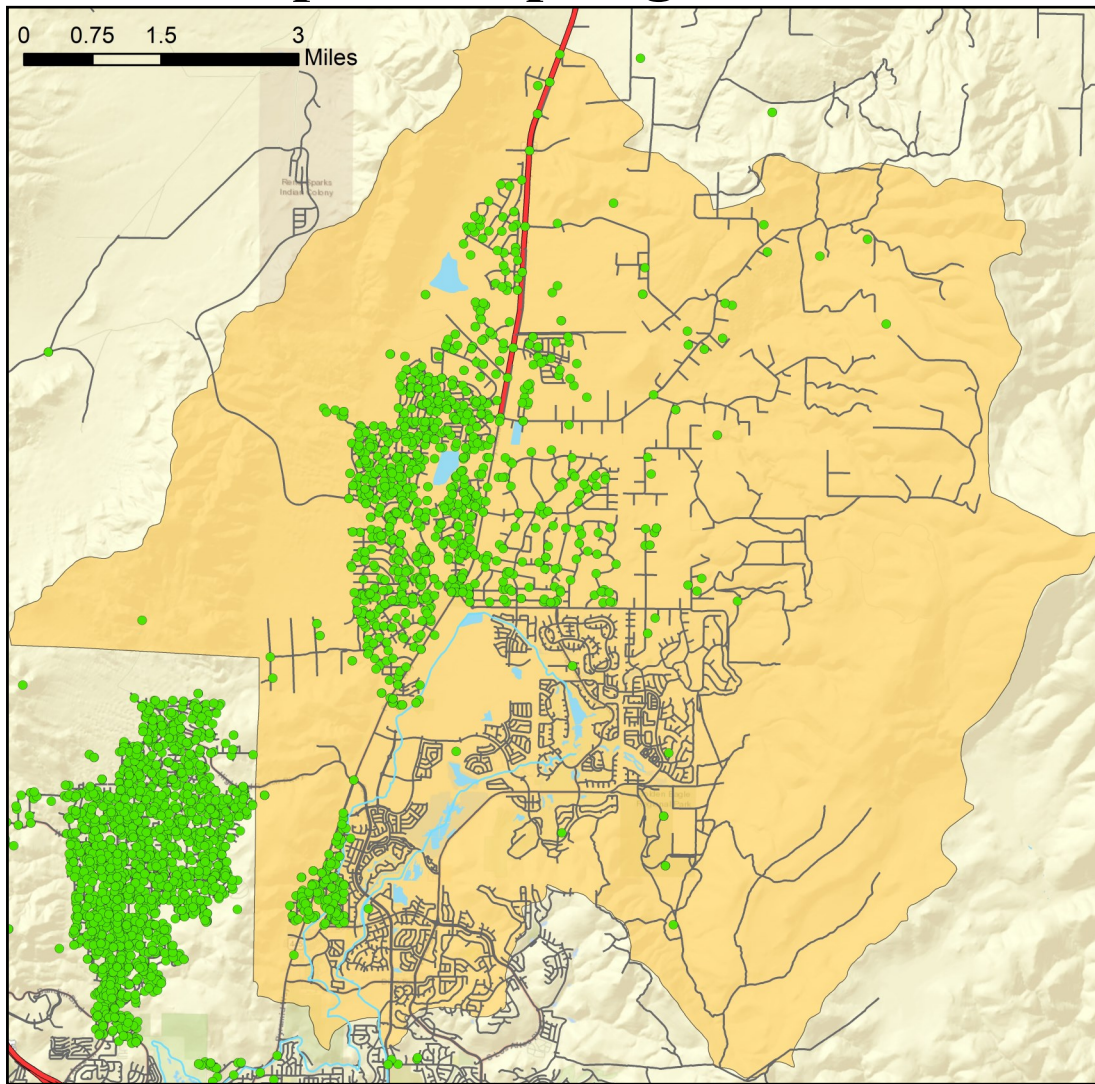
South Truckee Meadows/Washoe Valley CAB



Offense Categories	Q2	3yr Avg	Up/Down	Offense Categories	Q2	3yr Avg	Up/Down
All Other Offenses	58	37	↑	Homicide Offenses	0	0	●
Animal Cruelty	0	0	●	Human Trafficking Offenses	0	0	●
Arson	1	0	↑	Kidnapping/Abduction	1	1	●
Assault Offenses	28	26	↑	Larceny/Theft Offenses	19	52	↓
Bad Checks	0	1	↓	Liquor Law Violations	3	1	↑
Bribery	0	0	●	Motor Vehicle Theft	2	4	↓
Burglary	10	11	↓	Peeping Tom	0	0	●
Counterfeiting/Forgery	5	2	↑	Pornography/Obscene Material	0	2	↓
Curfew/Loitering/Vagrancy	0	0	●	Prostitution Offenses	0	0	●
Destruction/Damage/Vandalism	16	29	↓	Robbery	2	0	↑
Disorderly Conduct	0	3	↓	Sex Offenses	4	6	↓
Driving Under the Influence	18	13	↑	Sex Offenses, Nonforcible	0	0	●
Drug Equipment Violations	20	5	↑	Stolen Property Offenses	5	6	↓
Drug/Narcotic Violations	28	7	↑	Trespass of Real Property	1	3	↓
Drunkenness	0	0	●	Weapon Law Violations	11	2	↑
Embezzlement	0	1	↓	CFS Status	Q2	3yr Avg	Up/Down
Extortion/Blackmail	0	2	↓	Dispatched	748	754	↓
Family Offenses (Nonviolent)	10	4	↑	Initiated	1,186	1,024	↑
Fraud Offenses	37	42	↓	Unspecified	1,378	913	↑
Gambling Offenses	0	0	●	Total	3,312	2,691	↑

Note: Initiated CFS are defined by whether the created date and time listed in the CFS match the on scene date and time entered by dispatch. Additionally, follow up and assignment CFS types are included in this category. Dispatched CFS are defined by whether an on scene time is listed in the CFS, and the CFS is not initially defined as initiated. Unspecified CFS include CFS with no on scene date and time information.

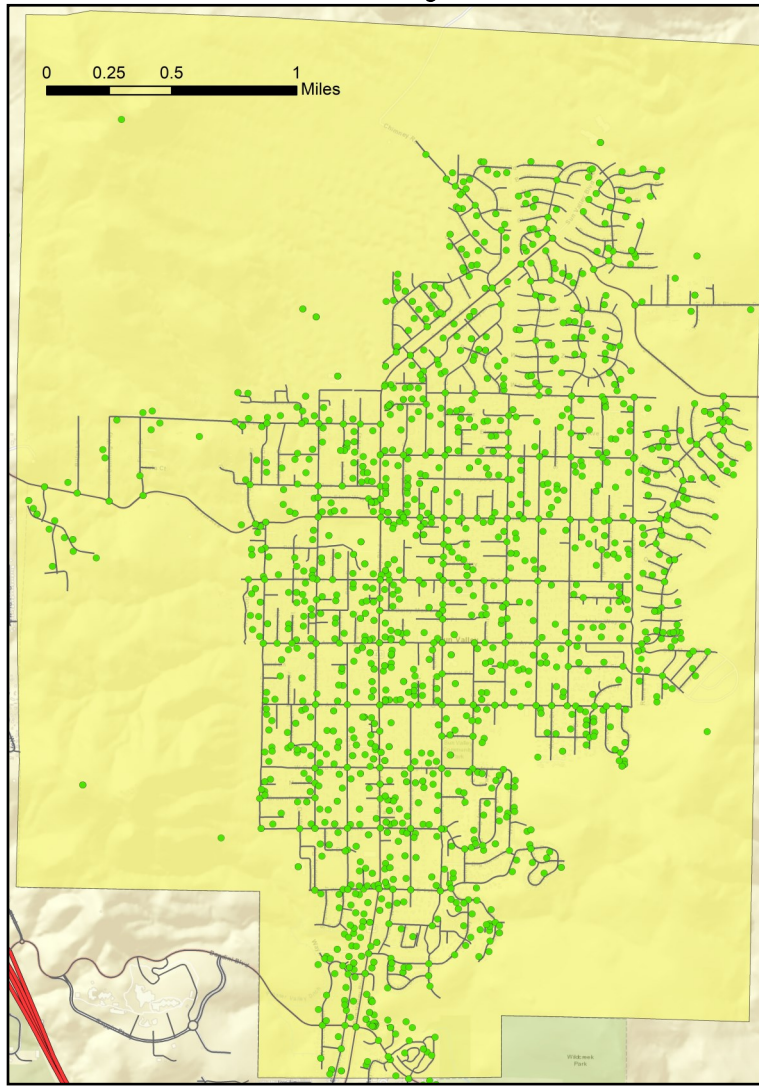
Spanish Springs CAB



Offense Categories	Q2	3yr Avg	Up/Down	Offense Categories	Q2	3yr Avg	Up/Down
All Other Offenses	14	14	●	Homicide Offenses	0	0	●
Animal Cruelty	2	0	↑	Human Trafficking Offenses	0	0	●
Arson	0	0	●	Kidnapping/Abduction	2	1	↑
Assault Offenses	24	16	↑	Larceny/Theft Offenses	11	23	↓
Bad Checks	0	0	●	Liquor Law Violations	1	0	↑
Bribery	0	0	●	Motor Vehicle Theft	0	3	↓
Burglary	8	6	↑	Peeping Tom	0	0	●
Counterfeiting/Forgery	4	1	↑	Pornography/Obscene Material	1	0	↑
Curfew/Loitering/Vagrancy	1	1	●	Prostitution Offenses	1	0	↑
Destruction/Damage/Vandalism	14	20	↓	Robbery	1	0	↑
Disorderly Conduct	5	2	↑	Sex Offenses	3	3	●
Driving Under the Influence	6	7	↓	Sex Offenses, Nonforcible	1	0	↑
Drug Equipment Violations	4	7	↓	Stolen Property Offenses	0	1	↓
Drug/Narcotic Violations	6	8	↓	Trespass of Real Property	3	1	↑
Drunkenness	0	0	●	Weapon Law Violations	4	3	↑
Embezzlement	1	1	●	CFS Status	Q2	3yr Avg	Up/Down
Extortion/Blackmail	1	1	●	Dispatched	502	463	↑
Family Offenses (Nonviolent)	5	2	↑	Initiated	426	460	↓
Fraud Offenses	24	30	↓	Unspecified	870	561	↑
Gambling Offenses	0	0	●	Total	1,798	1,483	↑

Note: Initiated CFS are defined by whether the created date and time listed in the CFS match the on scene date and time entered by dispatch. Additionally, follow up and assignment CFS types are included in this category. Dispatched CFS are defined by whether an on scene time is listed in the CFS, and the CFS is not initially defined as initiated. Unspecified CFS include CFS with no on scene date and time information.

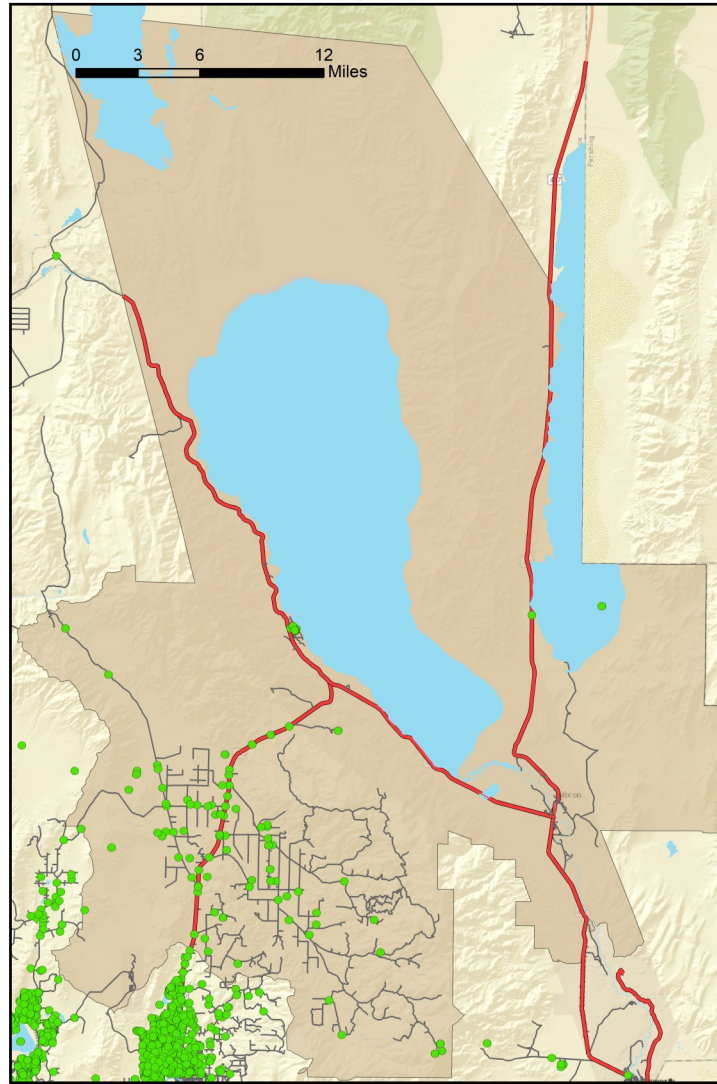
Sun Valley CAB



Offense Categories	Q2	3yr Avg	Up/Down	Offense Categories	Q2	3yr Avg	Up/Down
All Other Offenses	100	95	↑	Homicide Offenses	1	0	↑
Animal Cruelty	1	1	●	Human Trafficking Offenses	0	0	●
Arson	1	1	●	Kidnapping/Abduction	4	2	↑
Assault Offenses	56	54	↑	Larceny/Theft Offenses	44	29	↑
Bad Checks	0	0	●	Liquor Law Violations	1	3	↓
Bribery	0	0	●	Motor Vehicle Theft	14	7	↑
Burglary	13	10	↑	Peeping Tom	0	0	●
Counterfeiting/Forgery	3	4	↓	Pornography/Obscene Material	1	0	↑
Curfew/Loitering/Vagrancy	0	2	↓	Prostitution Offenses	0	0	●
Destruction/Damage/Vandalism	36	36	●	Robbery	2	1	↑
Disorderly Conduct	7	4	↑	Sex Offenses	10	9	↑
Driving Under the Influence	17	22	↓	Sex Offenses, Nonforcible	1	0	↑
Drug Equipment Violations	22	29	↓	Stolen Property Offenses	3	11	↓
Drug/Narcotic Violations	25	36	↓	Trespass of Real Property	8	7	↑
Drunkenness	0	0	●	Weapon Law Violations	9	9	●
Embezzlement	0	1	↓	CFS Status	Q2	3yr Avg	Up/Down
Extortion/Blackmail	1	1	●	Dispatched	1,100	1,187	↓
Family Offenses (Nonviolent)	9	10	↓	Initiated	1,531	1,590	↓
Fraud Offenses	21	24	↓	Unspecified	957	797	↑
Gambling Offenses	0	0	●	Total	3,588	3,575	↑

Note: Initiated CFS are defined by whether the created date and time listed in the CFS match the on scene date and time entered by dispatch. Additionally, follow up and assignment CFS types are included in this category. Dispatched CFS are defined by whether an on scene time is listed in the CFS, and the CFS is not initially defined as initiated. Unspecified CFS include CFS with no on scene date and time information.

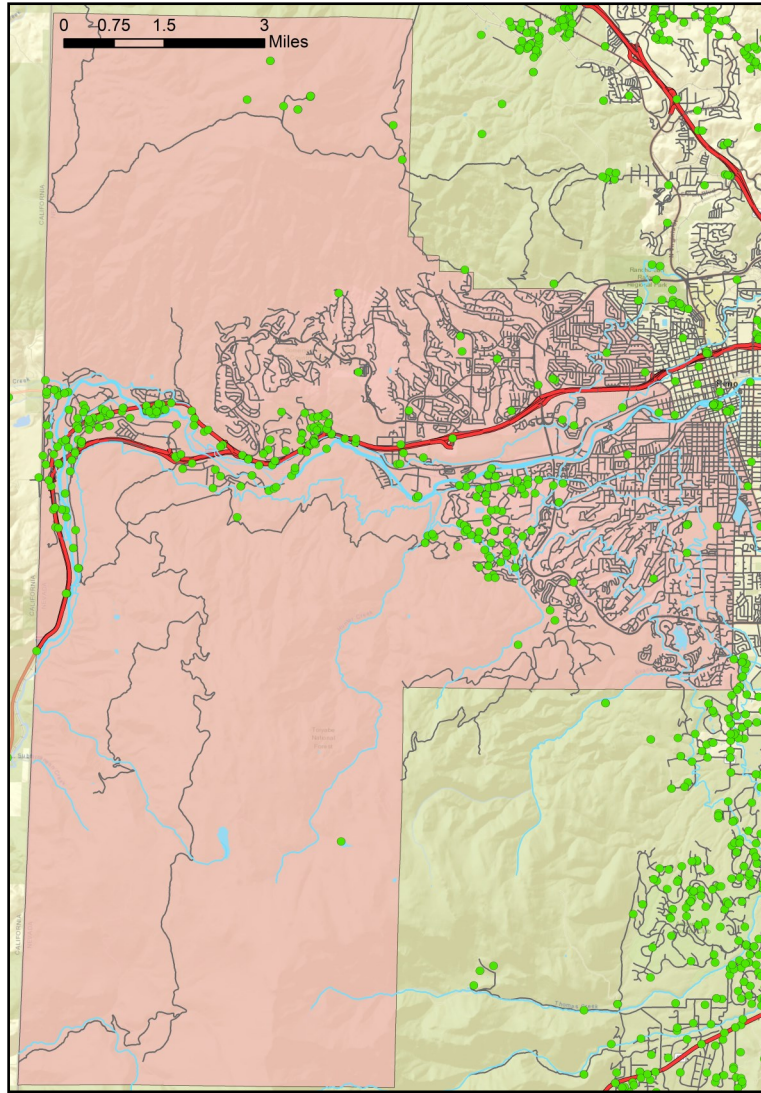
Warm Springs/Rural CAB



Offense Categories	Q2	3yr Avg	Up/Down	Offense Categories	Q2	3yr Avg	Up/Down
All Other Offenses	3	4	↓	Homicide Offenses	0	0	●
Animal Cruelty	0	0	●	Human Trafficking Offenses	0	0	●
Arson	0	0	●	Kidnapping/Abduction	0	0	●
Assault Offenses	2	5	↓	Larceny/Theft Offenses	2	2	●
Bad Checks	0	0	●	Liquor Law Violations	0	0	●
Bribery	0	0	●	Motor Vehicle Theft	2	0	↑
Burglary	0	0	●	Peeping Tom	0	0	●
Counterfeiting/Forgery	0	0	●	Pornography/Obscene Material	0	0	●
Curfew/Loitering/Vagrancy	0	0	●	Prostitution Offenses	0	0	●
Destruction/Damage/Vandalism	0	1	↓	Robbery	0	0	●
Disorderly Conduct	0	0	●	Sex Offenses	0	1	↓
Driving Under the Influence	0	1	↓	Sex Offenses, Nonforcible	0	0	●
Drug Equipment Violations	0	0	●	Stolen Property Offenses	0	0	●
Drug/Narcotic Violations	0	1	↓	Trespass of Real Property	1	0	↑
Drunkenness	0	0	●	Weapon Law Violations	1	1	●
Embezzlement	1	0	↑	CFS Status	Q2	3yr Avg	Up/Down
Extortion/Blackmail	0	0	●	Dispatched	55	51	↑
Family Offenses (Nonviolent)	0	1	↓	Initiated	63	76	↓
Fraud Offenses	1	3	↓	Unspecified	119	75	↑
Gambling Offenses	0	0	●	Total	237	202	↑

Note: Initiated CFS are defined by whether the created date and time listed in the CFS match the on scene date and time entered by dispatch. Additionally, follow up and assignment CFS types are included in this category. Dispatched CFS are defined by whether an on scene time is listed in the CFS, and the CFS is not initially defined as initiated. Unspecified CFS include CFS with no on scene date and time information.

West Truckee Meadows/Verdi CAB



Offense Categories	Q2	3yr Avg	Up/Down	Offense Categories	Q2	3yr Avg	Up/Down
All Other Offenses	11	12	↓	Homicide Offenses	0	0	●
Animal Cruelty	0	0	●	Human Trafficking Offenses	0	0	●
Arson	0	0	●	Kidnapping/Abduction	0	0	●
Assault Offenses	5	2	↑	Larceny/Theft Offenses	4	9	↓
Bad Checks	0	0	●	Liquor Law Violations	0	1	↓
Bribery	0	0	●	Motor Vehicle Theft	0	1	↓
Burglary	4	3	↑	Peeping Tom	0	0	●
Counterfeiting/Forgery	1	1	●	Pornography/Obscene Material	0	0	●
Curfew/Loitering/Vagrancy	0	0	●	Prostitution Offenses	0	0	●
Destruction/Damage/Vandalism	4	7	↓	Robbery	0	0	●
Disorderly Conduct	0	1	↓	Sex Offenses	0	0	●
Driving Under the Influence	4	3	↑	Sex Offenses, Nonforcible	1	0	↑
Drug Equipment Violations	3	5	↓	Stolen Property Offenses	1	1	●
Drug/Narcotic Violations	6	9	↓	Trespass of Real Property	0	1	↓
Drunkenness	0	0	●	Weapon Law Violations	2	2	●
Embezzlement	0	0	●	CFS Status	Q2	3yr Avg	Up/Down
Extortion/Blackmail	0	0	●	Dispatched	156	187	↓
Family Offenses (Nonviolent)	1	1	●	Initiated	437	340	↑
Fraud Offenses	7	5	↑	Unspecified	216	157	↑
Gambling Offenses	0	0	●	Total	809	684	↑

Note: Initiated CFS are defined by whether the created date and time listed in the CFS match the on scene date and time entered by dispatch. Additionally, follow up and assignment CFS types are included in this category. Dispatched CFS are defined by whether an on scene time is listed in the CFS, and the CFS is not initially defined as initiated. Unspecified CFS include CFS with no on scene date and time information.